

## DNR Gates: 2024-2025 Hunting Season Openings

DNR is trying new ways to keep more DNR gates open to the public for use during hunting season. There are some gates that have been closed (with Intertribal locks on them) that will be left standing open for parts of this season this year, as long as vandalism, timber theft, and garbage dumping do not occur.

There will be state Master Hunters in these areas keeping an eye out for illegal activity and providing education, but they ARE NOT ENFORCEMENT and should not act like it.

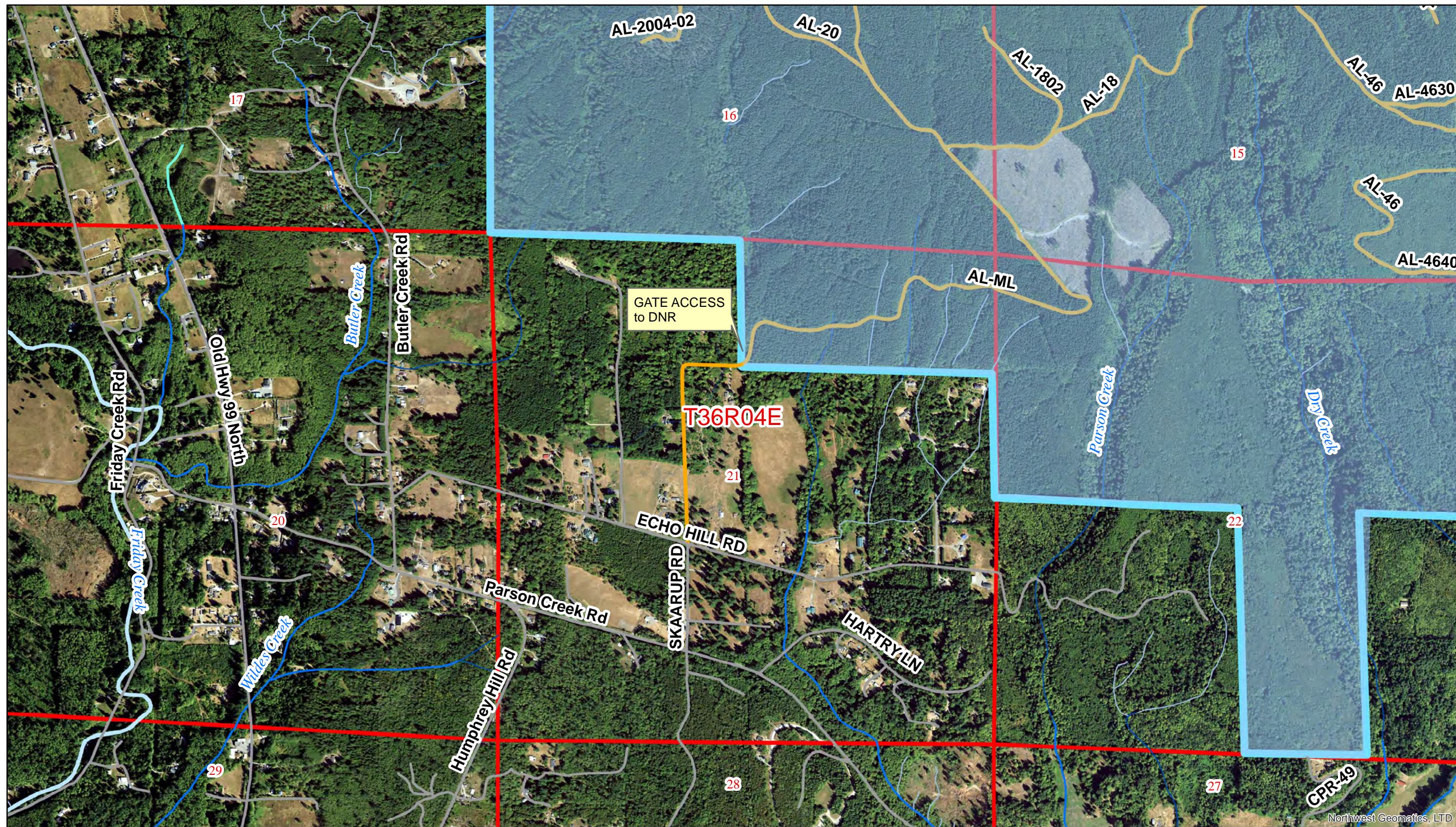
Gate Name	General Area	Opens	Closes (will still have an intertribal lock after closing)
Anderson Mountain	Anderson Mountain	September 20	December 31
Dempsey	East Harry Osborne State Forest	October 11	October 31
Birdsview	East Harry Osborne State Forest	Open for WDFW certified disabled hunters only	
Silver Lake	Red Mountain	October 11	October 31 (Might reopen Nov 14-17)
Slide Mountain/ Racehorse Creek	Slide Mountain/ Racehorse Creek	September 20	December 31
Sumas	Sumas Mountain	October 11	October 31
Van Zandt Dike	Van Zandt Dike	September 20	December 31
Medford	West Harry Osborne State Forest	October 11	October 31

Below are maps showing the gates/areas in question.

The last two maps show land ownership information for Anderson Mountain and Van Zandt Dike areas.

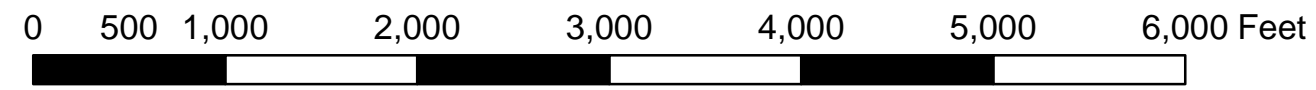
# ANDERSON MOUNTAIN LANDSCAPE

Gate Open from September 20 through December 31. If vandalism, timber theft and garbage dumping occur, gate may be closed early. Thank you WDFW and Master Hunters for helping to keep area open.



**DRAFT**

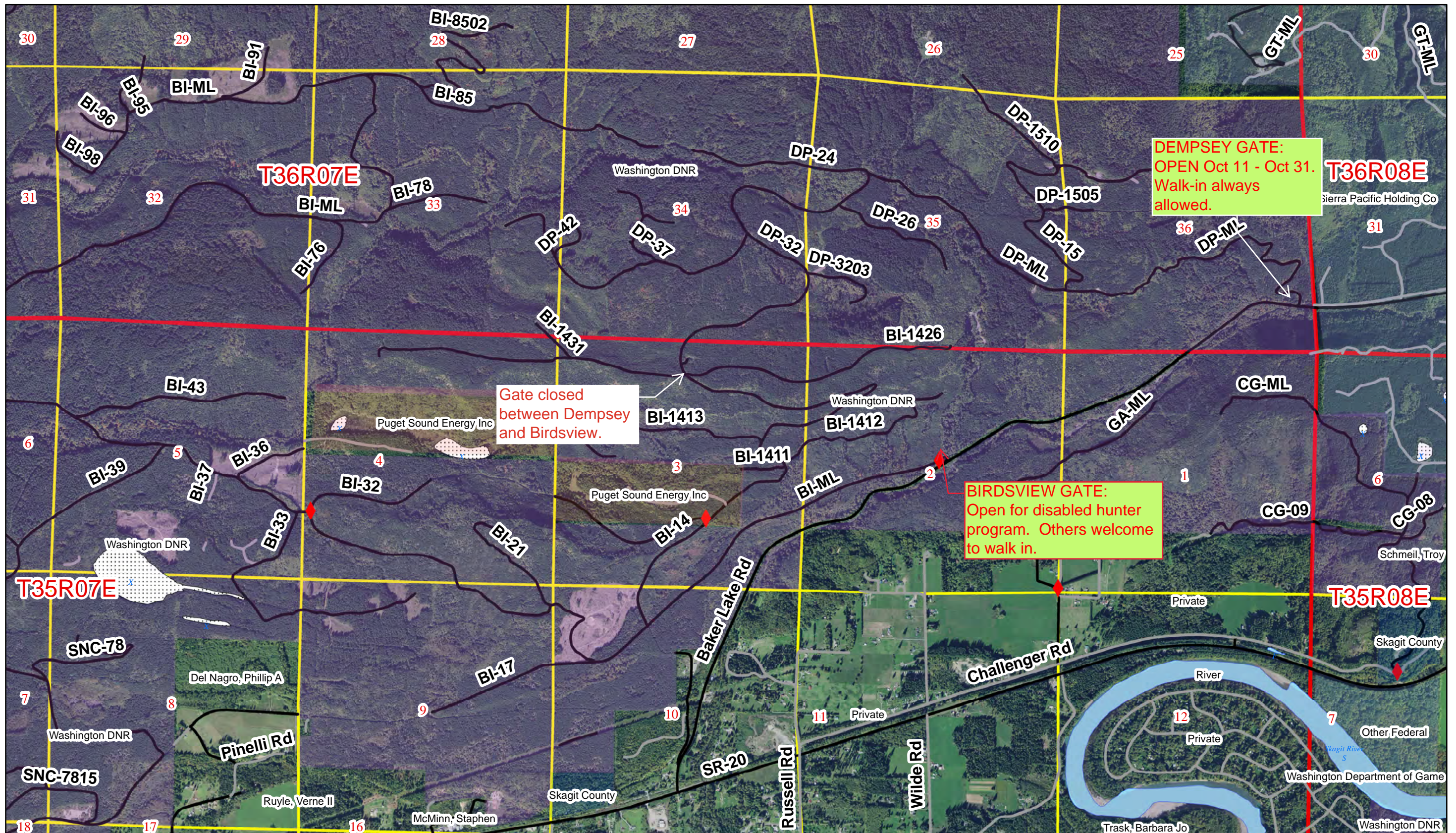
If vandalism, timber theft and garbage dumping occur, gate may be closed early.



1:12,000  
1 inch = 1,000 feet

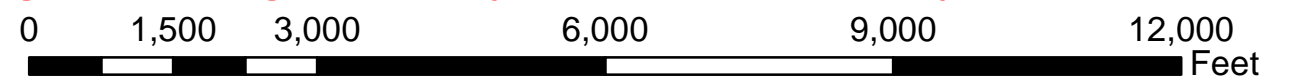
# EAST HARRY OSBORNE STATE FOREST

Dempsey Gate is open October 11 through October 31. Birdsview Gate is open for WDFW certified disabled hunters only. All hunters welcome as walk-in for both areas at all times. Follow WDFW seasons and regulations.



If vandalism, timber theft and garbage dumping occur, gate may be closed early.

## DRAFT

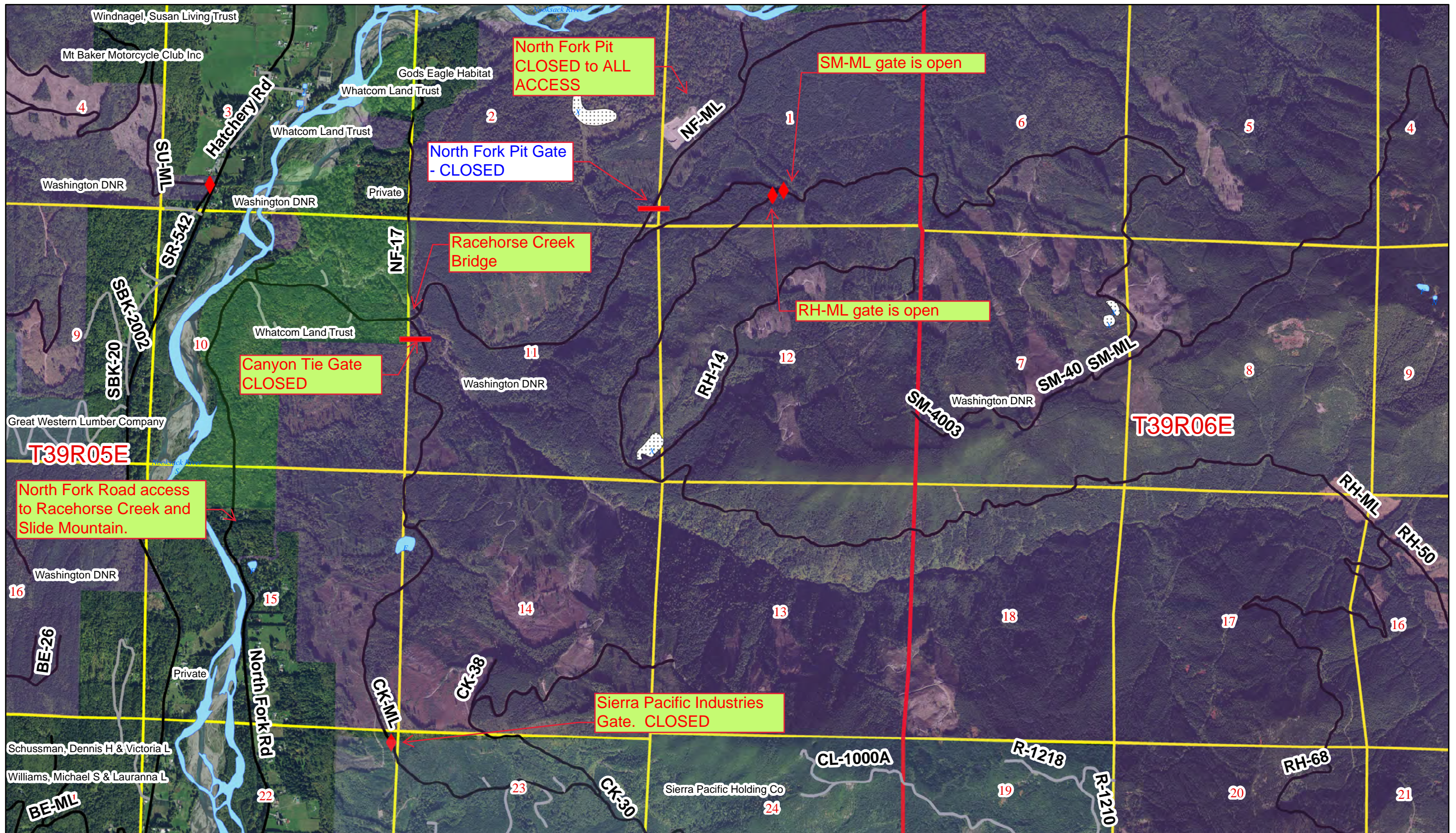


1:24,000



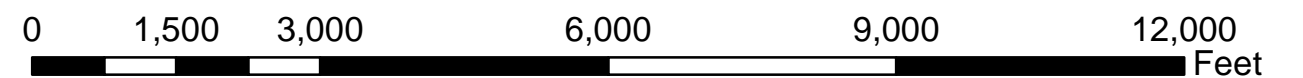
# SLIDE MOUNTAIN AND RACEHORSE CREEK LANDSCAPE

Some Gates Open from September 20 through December 31. If vandalism, timber theft and garbage dumping occur, gate may be closed early.



**DRAFT**

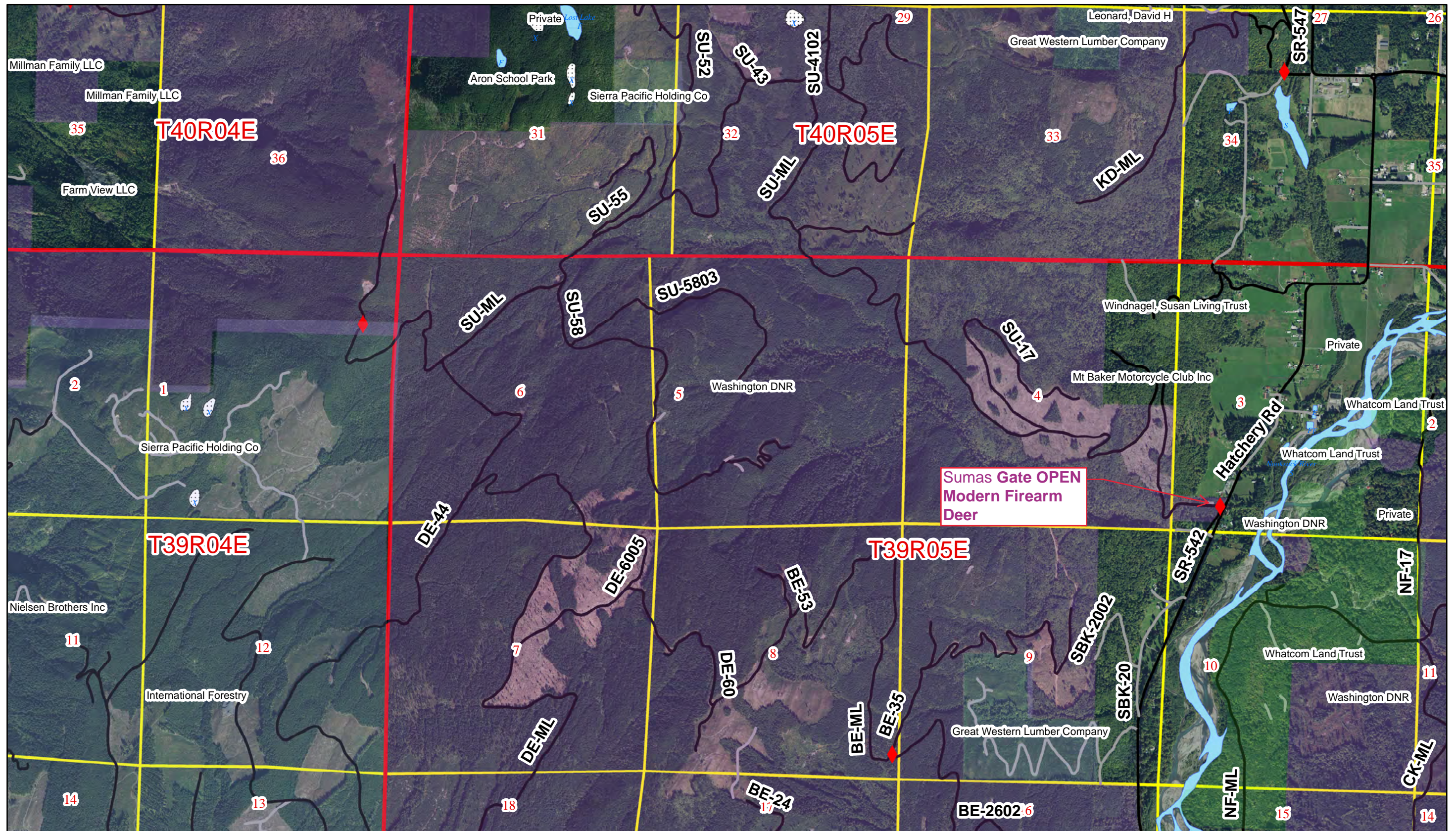
If vandalism, timber theft and garbage dumping occur, gate may be closed early.



1:24,000

# SUMAS MOUNTAIN LANDSCAPE

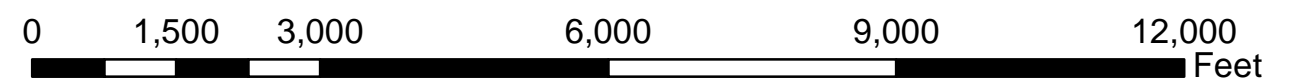
Sumas Gate is open October 11 through October 31. All hunters welcome as walk-in for area at all times. Follow WDFW seasons and regulations Gate may tentatively be open November 14 through 17.



1:24,000



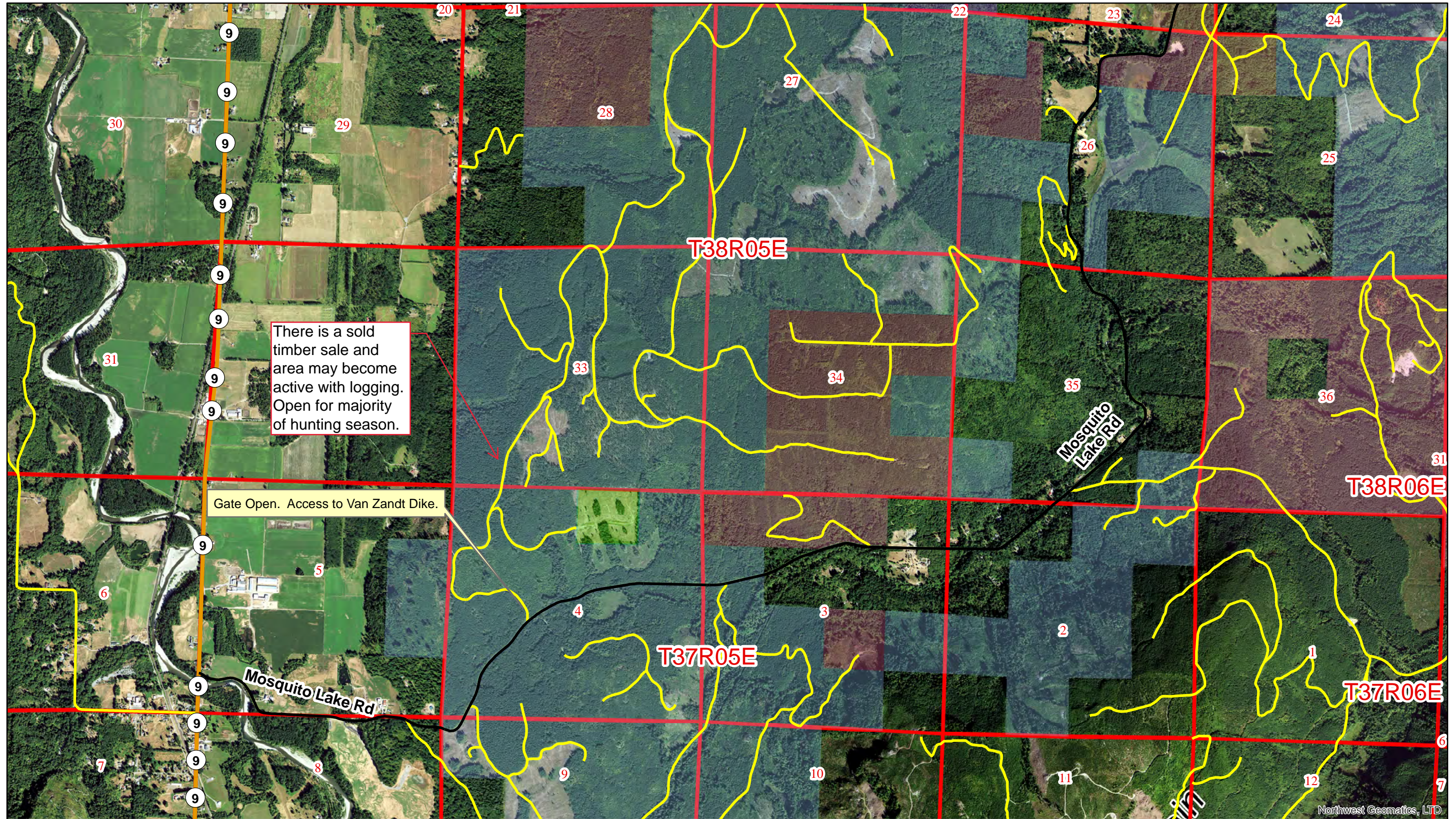
## DRAFT



If vandalism, timber theft and garbage dumping occur, gate may be closed early.

# VAN ZANDT DIKE LANDSCAPE

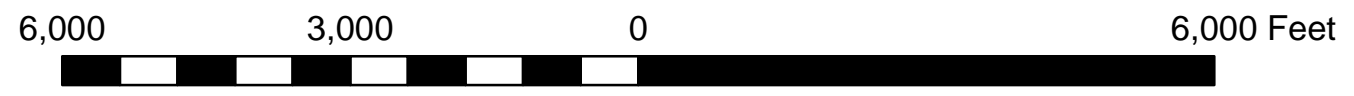
Gate Open from September 20 through December 31. If vandalism, timber theft and garbage dumping occur, gate may be closed early. Thank you WDFW and Master Hunters for helping to keep area open.



There is a sold timber sale and area may become active with logging. Open for majority of hunting season.

Gate Open. Access to Van Zandt Dike.

# DRAFT

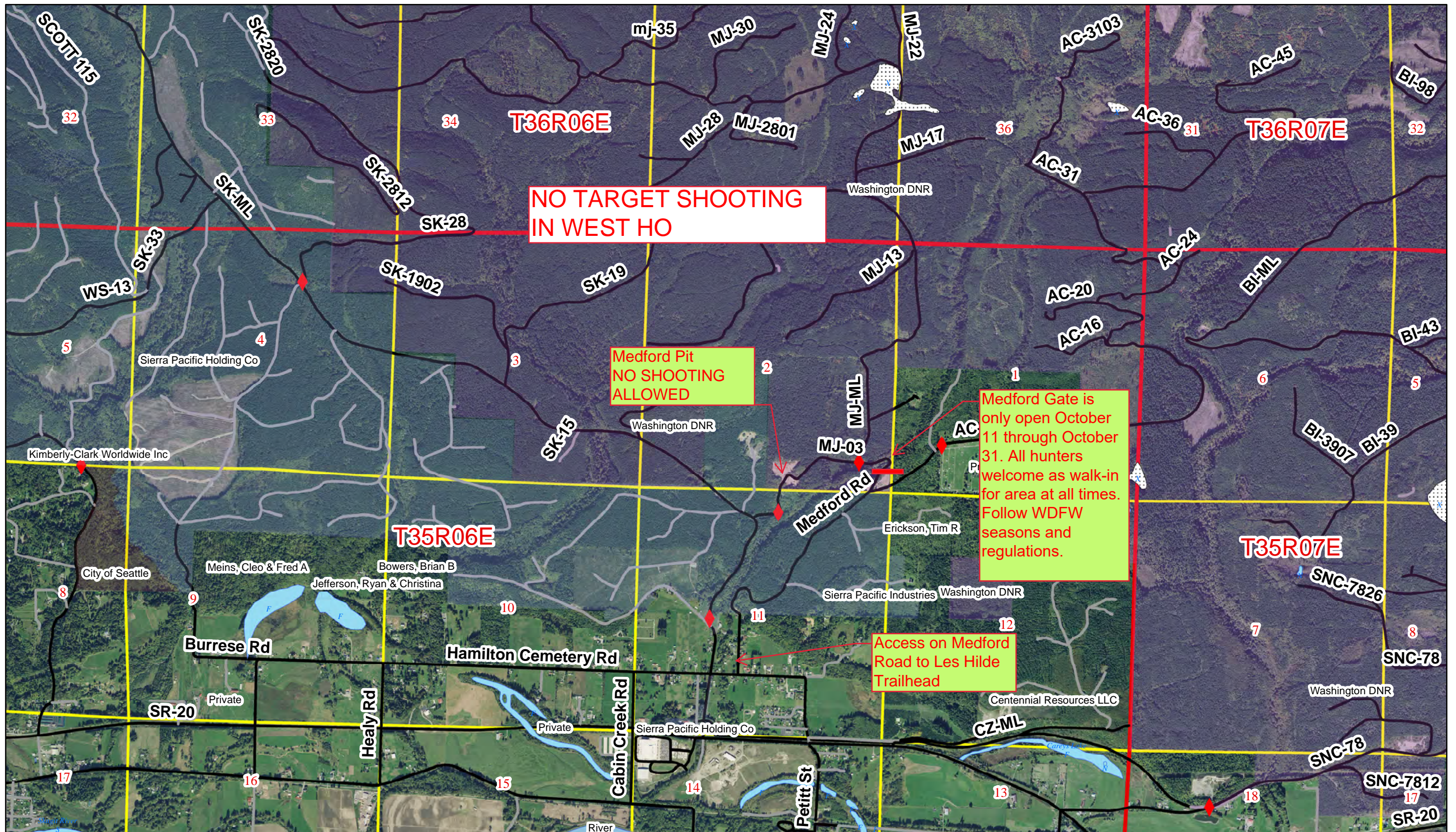


If vandalism, timber theft and garbage dumping occur, gate may be closed early.

1:24,000  
1 inch = 2,000 feet

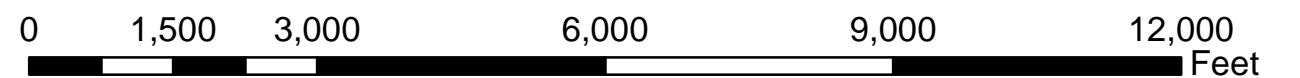
# WEST HARRY OSBORNE STATE FOREST

Medford Gate is open October 11 through October 31. All hunters welcome as walk-in for area at all times. Follow WDFW seasons and regulations.



If vandalism, timber theft and garbage dumping occur, gate may be closed early.

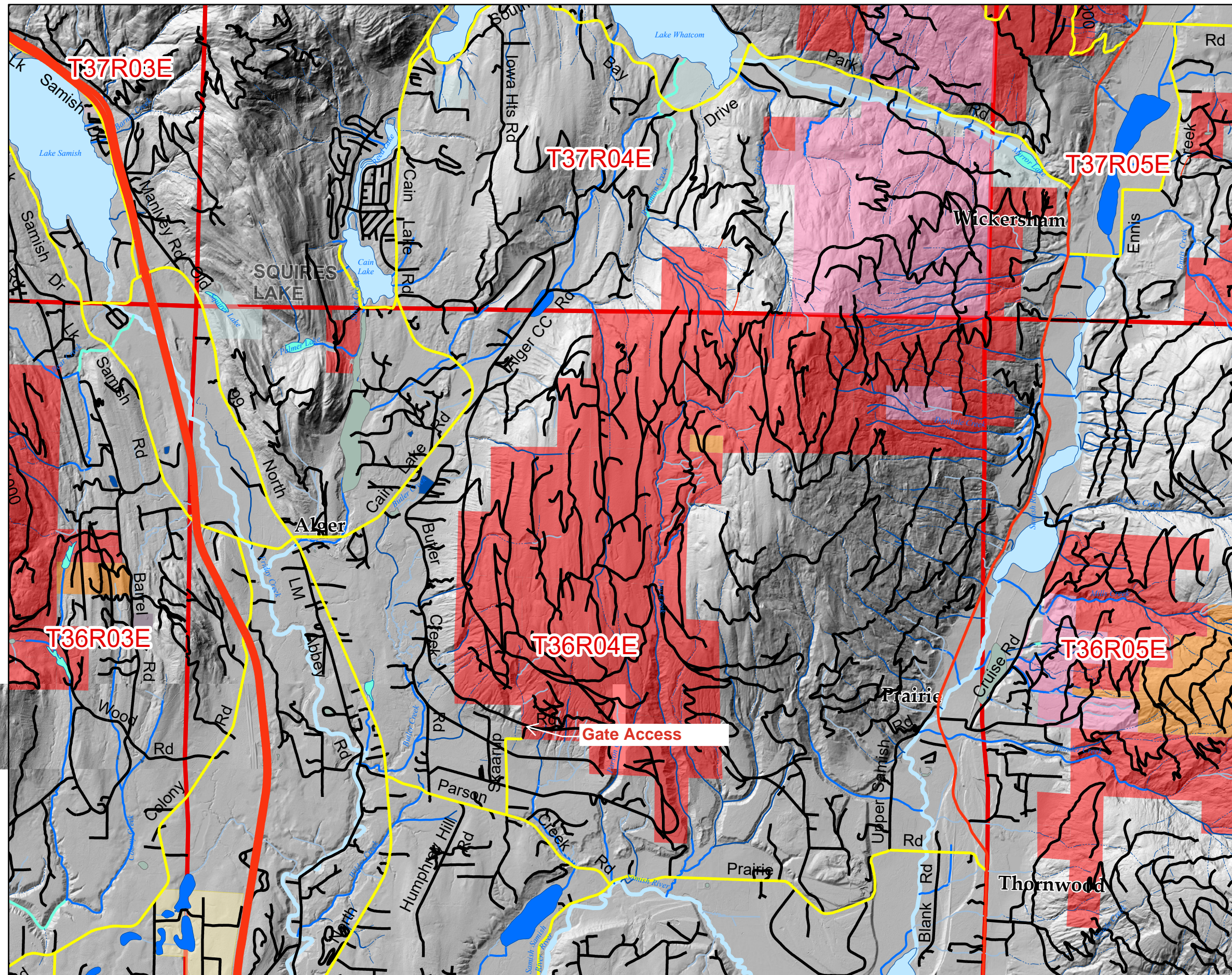
## DRAFT



1:24,000

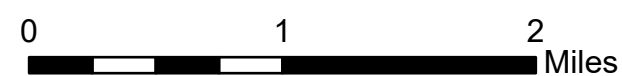


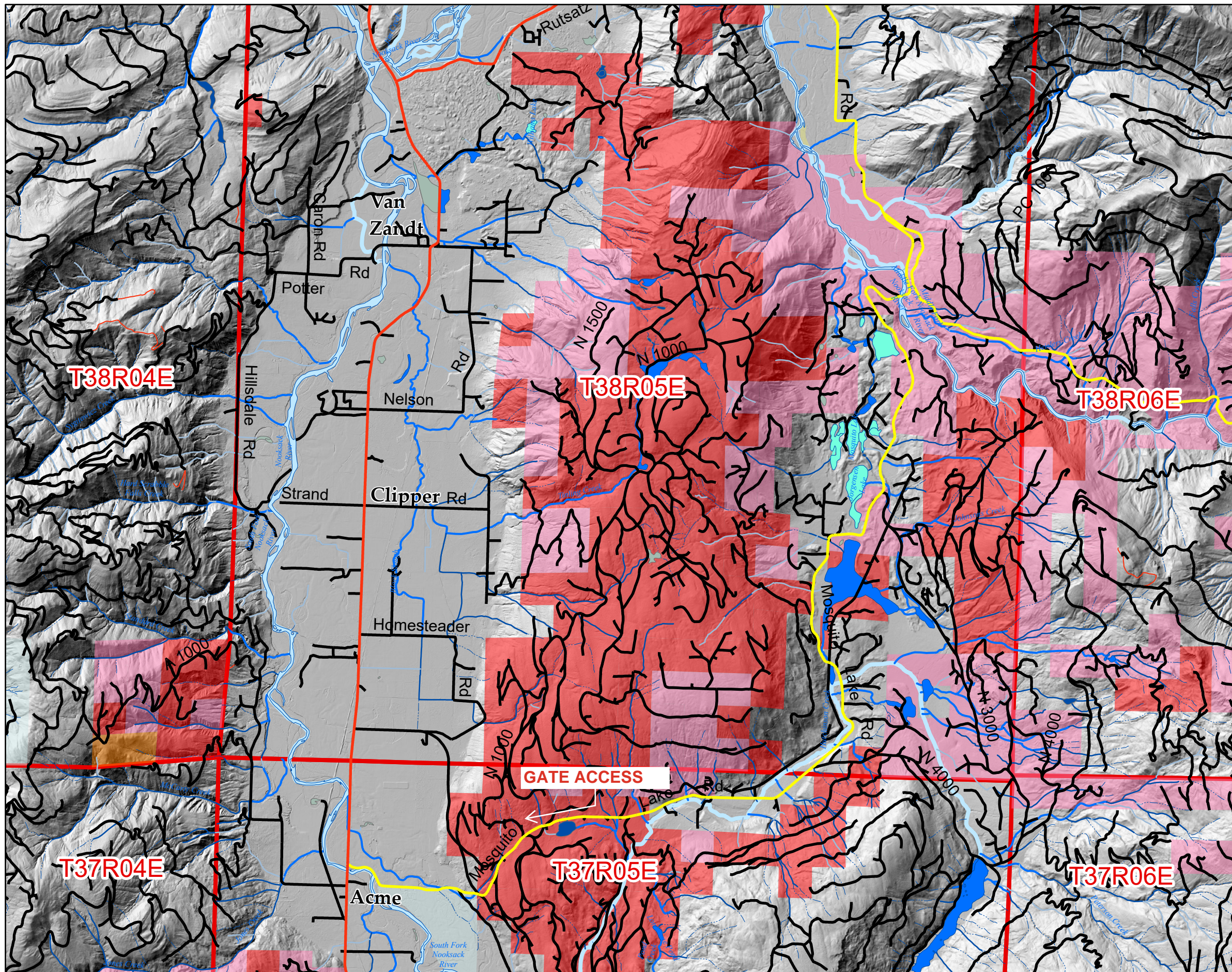




**Legend**

- |   |  |
|---|--|
| Administrative - DNR-Managed (Surface) Lands (4 Categories)   | DNR Roads by Activity Status   |
| Surface Lands   | State Lands - Roads by USGS Classification   |
| <ul style="list-style-type: none"> <li>Granted Trust Lands</li> <li>Forest Board Trust Lands</li> <li>Other DNR-Managed Lands</li> </ul>  | <ul style="list-style-type: none"> <li>1: Primary Highway/All-Weather/Hard Surface</li> <li>2: Secondary Highway/All-Weather/Hard Surface</li> <li>3: Light-Duty Road/All-Weather/Improved</li> <li>4: Unimproved Road/Fair or Dry Weather</li> <li>9: Freeway Ramps or Unknown</li> </ul> |
| Non-DNR Major Public Lands (ndmpl)  | State Lands - Roads by USGS Classification   |
| Non-DNR State Lands   | <ul style="list-style-type: none"> <li>1: Primary Highway/All-Weather/Hard Surface</li> <li>2: Secondary Highway/All-Weather/Hard Surface</li> <li>3: Light-Duty Road/All-Weather/Improved</li> <li>4: Unimproved Road/Fair or Dry Weather</li> <li>9: Freeway Ramps or Unknown</li> </ul> |
| Other Lands   |  |
| <ul style="list-style-type: none"> <li>WA Dept of Fish and Wildlife (3)</li> <li>Other State (1)</li> <li>County, Municipal or Other Lands (4)</li> <li>Administrative - Tribal Lands and Reservations (1)</li> </ul> |  |





**Legend**

Administrative -  
DNR-Managed  
(Surface) Lands (4  
Categories)

- Surface Lands
- Granted Trust Lands
  - Forest Board Trust Lands
  - Other DNR-Managed Lands

Non-DNR Major  
Public Lands  
(ndmpl)

- Federal Lands
- US Bureau of Land Management (2)

- Other Lands
- County, Municipal or Other Lands (2)

DNR Roads by  
Activity Status  
State Lands -  
Roads by USGS  
Classification

- 2: Secondary Highway/  
All-Weather/Hard  
Surface
- 3: Light-Duty Road/All-  
Weather/Improved
- 4: Unimproved Road/  
Fair or Dry Weather
- 9: Freeway Ramps or  
Unknown

State Lands -  
Roads by USGS  
Classification

- 2: Secondary Highway/  
All-Weather/Hard  
Surface
- 3: Light-Duty Road/All-  
Weather/Improved
- 4: Unimproved Road/  
Fair or Dry Weather
- 9: Freeway Ramps or  
Unknown

